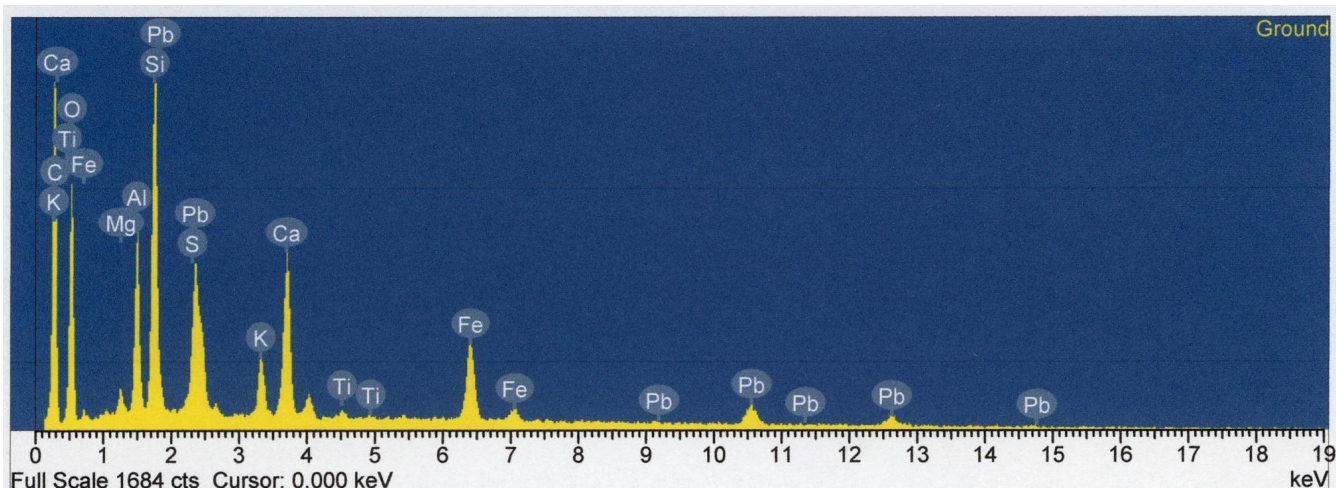


Sample 6

Light brown ground

EDS



Elements detected:

- C - Carbon
- O - Oxygen
- Mg - Magnesium
- Al - Aluminum
- Si - Silicon
- S - Sulfur
- K - Potassium
- Ca - Calcium
- Ti - Titanium
- Fe - Iron
- Pb - Lead

Pigments identified:

- Iron earths** - $\text{FeO}(\text{OH})$
- Chalk - CaCO_3
- Lead white - $2\text{PbCO}_3 \cdot \text{Pb}(\text{OH})_2$

Before he could paint on a canvas, Lorente Germán had to prepare its surface to hold the paint layers by first preparing the ground. He did this with a mixture of glue, chalk, lead white, and oil applied in multiples layers, each scraped smooth before the next was laid down. The artist included clay and iron oxide in his mixture to give it a brownish hue. Such reddish-brown grounds were an old established Spanish practice that would soon be replaced by the French fashion of a light grey ground. The color of the ground affects the vibrancy of the layers applied over it; the lighter French ground creates richer colors.